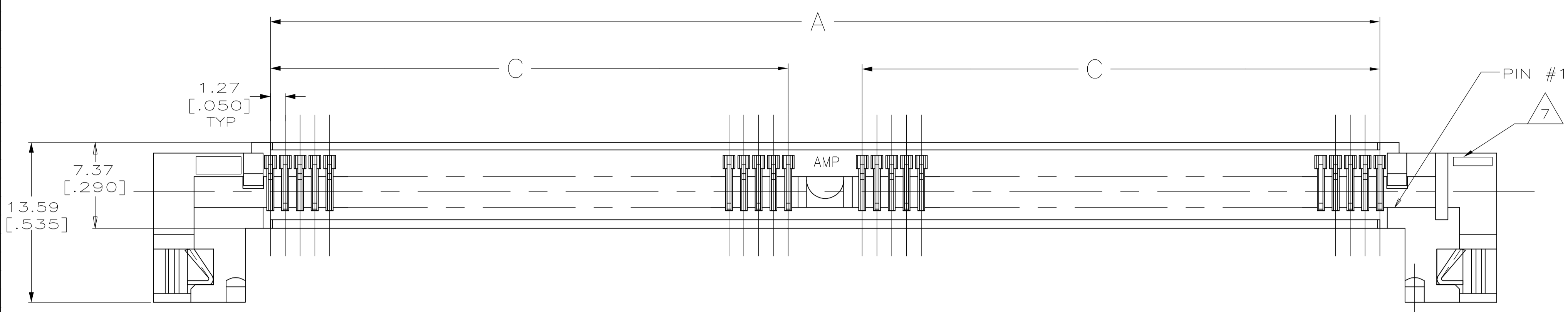
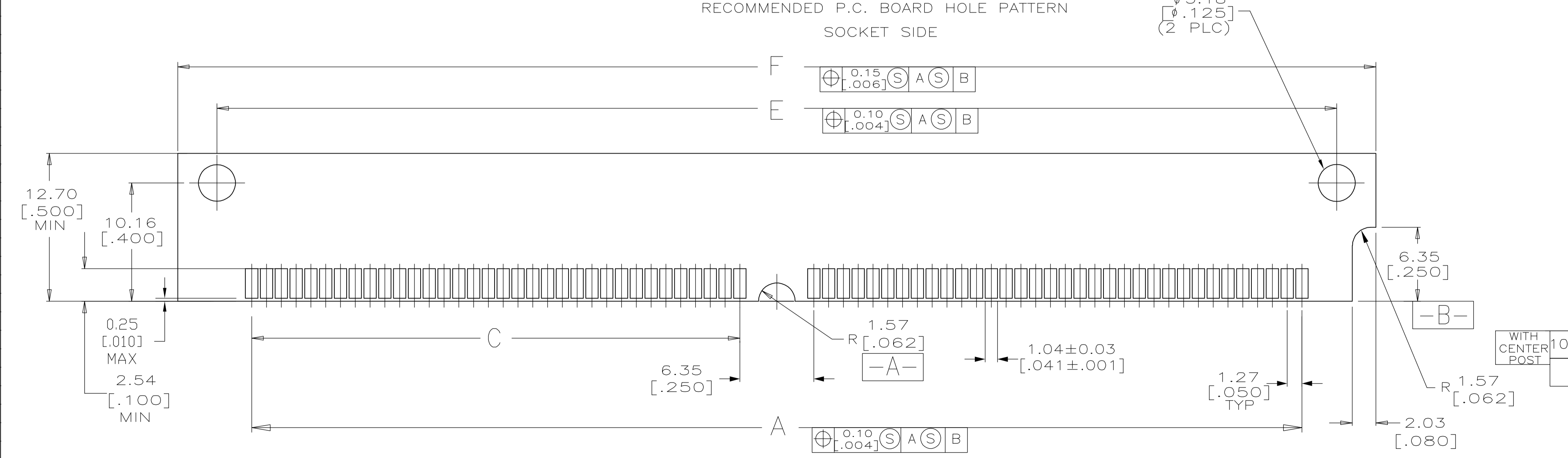
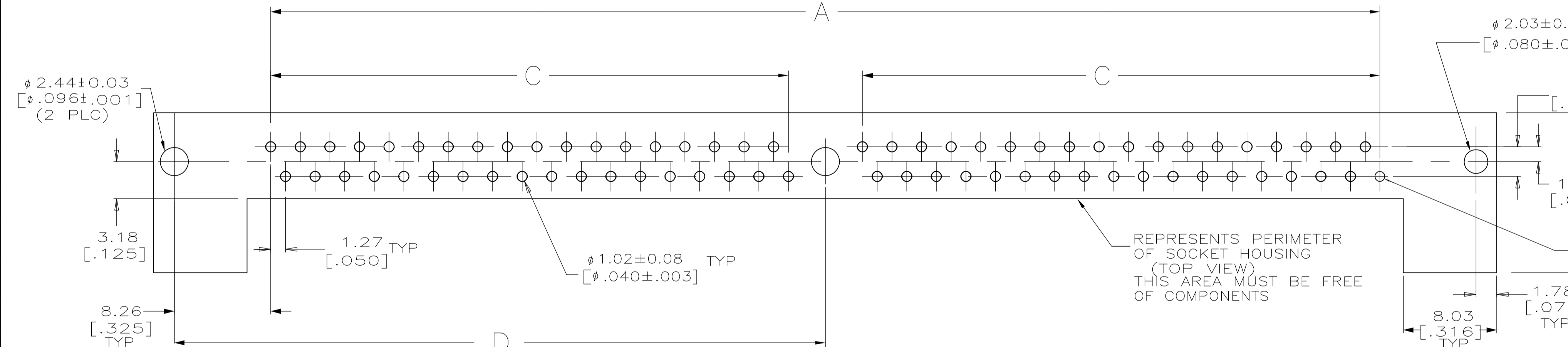
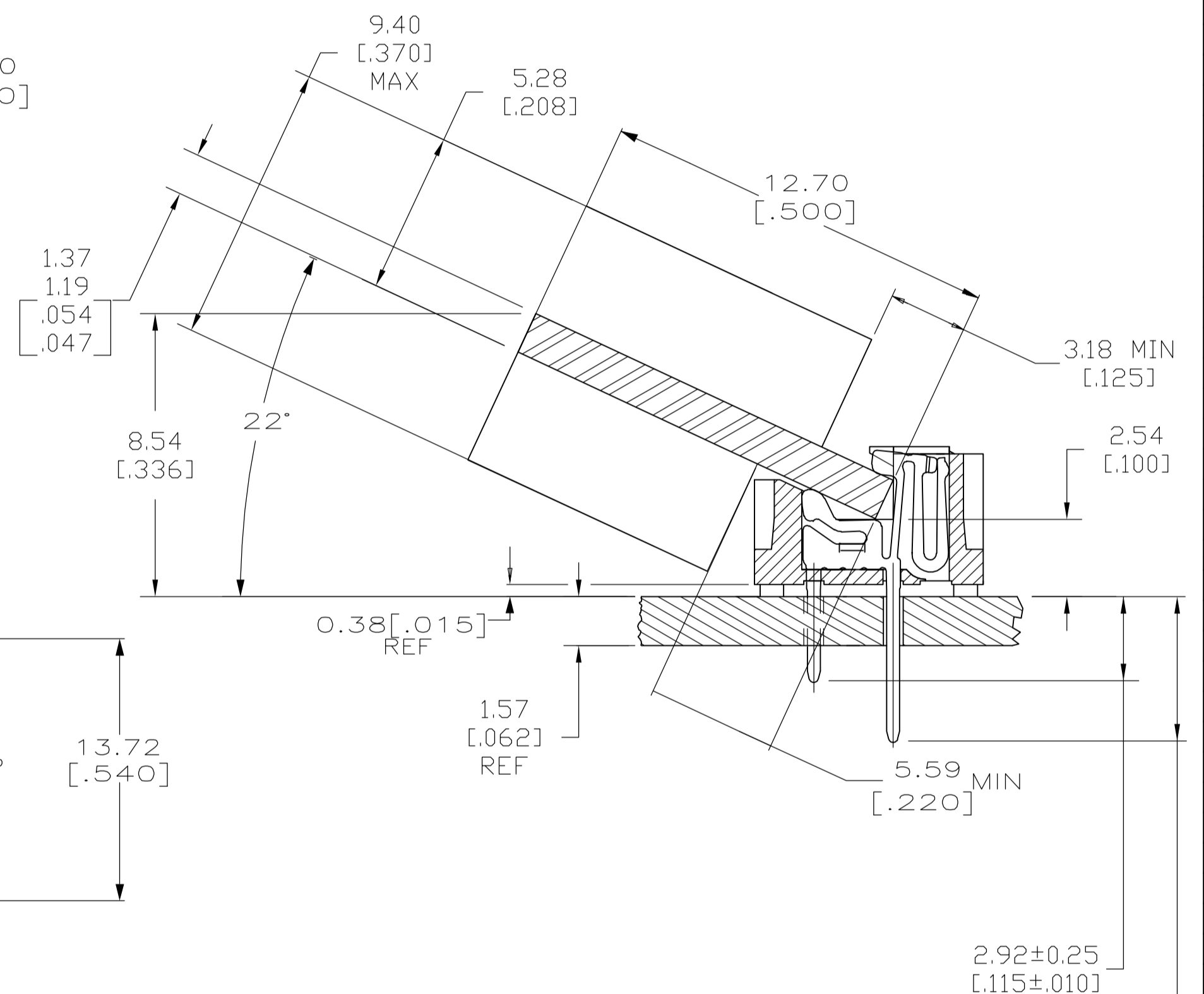
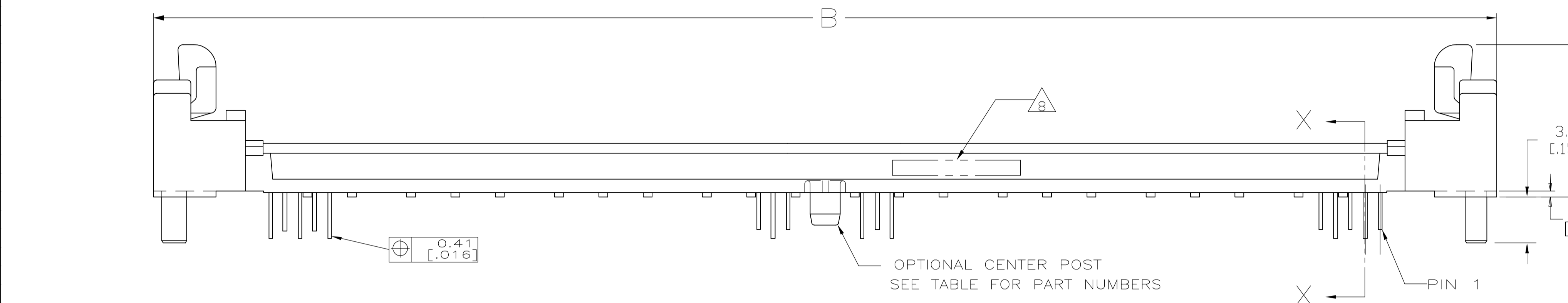


LOC		DIST		REVISIONS			
GP	00	REV	DATE	BY	APP'D	DATE	BY
B		REVISED PER ECO-06-007841	19JUL06	JDP	MB		



- ① HOUSING—MATERIAL : LIQUID-CRYSTAL-POLYMER.
- ② CONTACT—MATERIAL : PHOS. BRONZE.
- ③ LATCH—MATERIAL : STAINLESS STEEL.
- ④ CONTACT—PLATE: 0.00508[.000200] MIN. MATTE TIN OVER 0.00127 [.000050] MIN NICKEL.
- 5. IN ADDITION TO THOSE RECOMMENDED "SIMM" P.C. BOARD DIMENSIONS AND TOLERANCES SHOWN, ALL JEDEC SPECIFICATIONS APPLY AS SHOWN ON MO-116, ISSUE A.
- 6. RECOMMENDED MATING S.I.M.M. TAB METALLURGY:  
 BASE METAL—COPPER. PLATING TO BE 0.00762[.000300] MIN TIN/LEAD OVER 0.00127[.000050] MIN NICKEL.
- ⑦ 'S' IDENTIFIER LOCATED APPROXIMATELY AS SHOWN.
- ⑧ DATE CODE INFORMATION (YEAR WEEK), LOCATED APPROXIMATELY AS SHOWN ON OPPOSITE SIDE ONLY.



SECTION X-X  
 SCALE 5:1  
 (BOARDS SHOWN FOR REF ONLY)

WITH CENTER POST	F	E	D	C	B	A	NO. OF POSN	PART NO
107.95[4.250]	101.19[3.984]	55.88[2.200]	44.45[1.750]	115.32[4.540]	95.25[3.750]	72	5822110-3	

THIS DRAWING IS A CONTROLLED DOCUMENT.		DIN 9139 MCMMASTER 06JAN04		Tyco Electronics Corporation Harrisburg, PA 17105-3608
DIMENSIONS: mm [INCHES]	TOLERANCES UNLESS OTHERWISE SPECIFIED:	06JAN04		NAME
0 PLC ± -	1 PLC ± -	APVD M.YFOMANS 06JAN04	PRODUCT SPEC	CONNECTOR, MICRO-EDGE, .050, LP, TIN PL, W/METAL LATCH
2 PLC ± -	3 PLC ± 0.13[.005]	APPLICATION SPEC	SIZE	CAGE CODE
4 PLC ± -	ANGLES ± -	WEIGHT	A1	00779
MATERIAL	FINISH	CUSTOMER DRAWING	SCALE 4:1	SHEET 1 OF 1
①	②	③	④	REV B